



Test Bench Results

Object: LiveActAudio Emotion Line LAS110
Description: Floorstanding ported 2-way coax speakers



LIVE
ACT
AUDIO

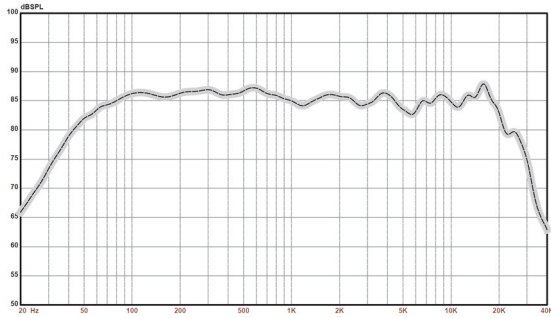


Figure1: SPL at reference angle 10°

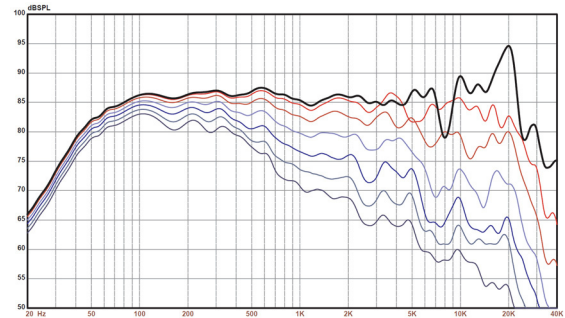


Figure2: SPL from 0° to 90°

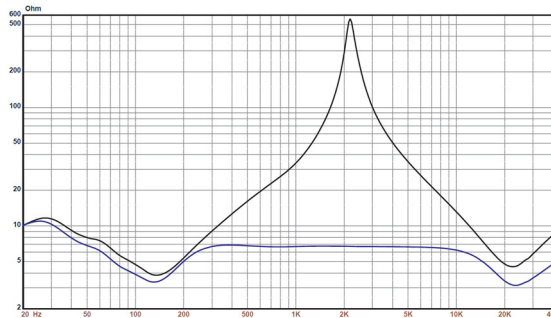


Figure3: Impedance with and without optional correction

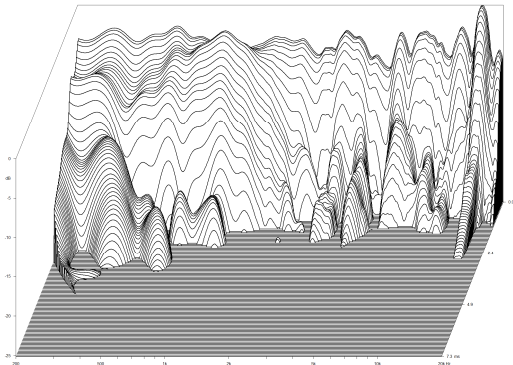


Figure4: Cumulative spectral decay

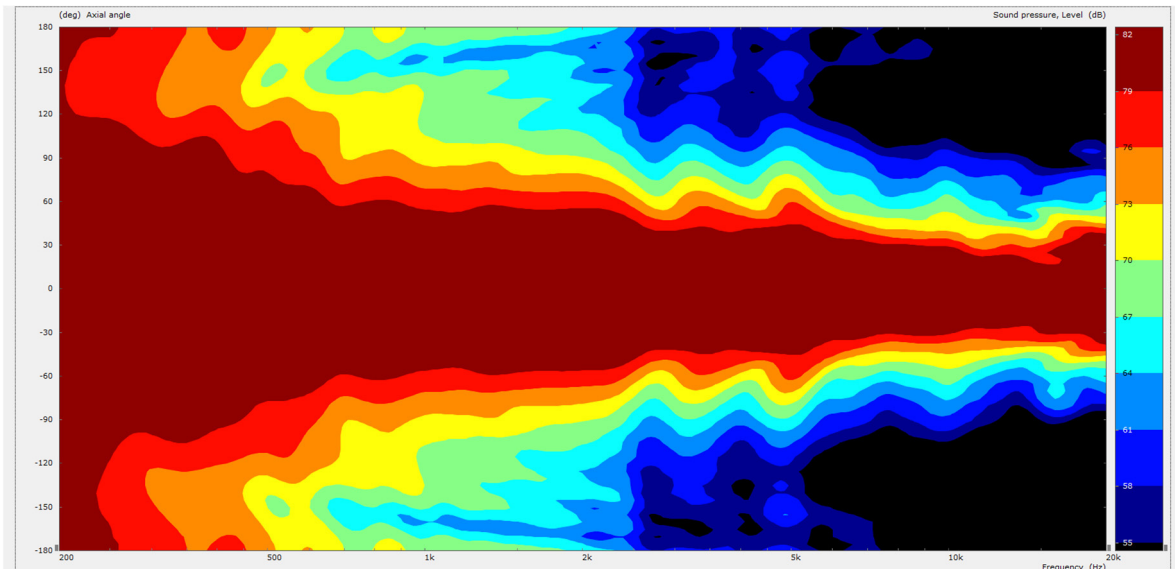


Figure5: polar plot (-180° to +180°)